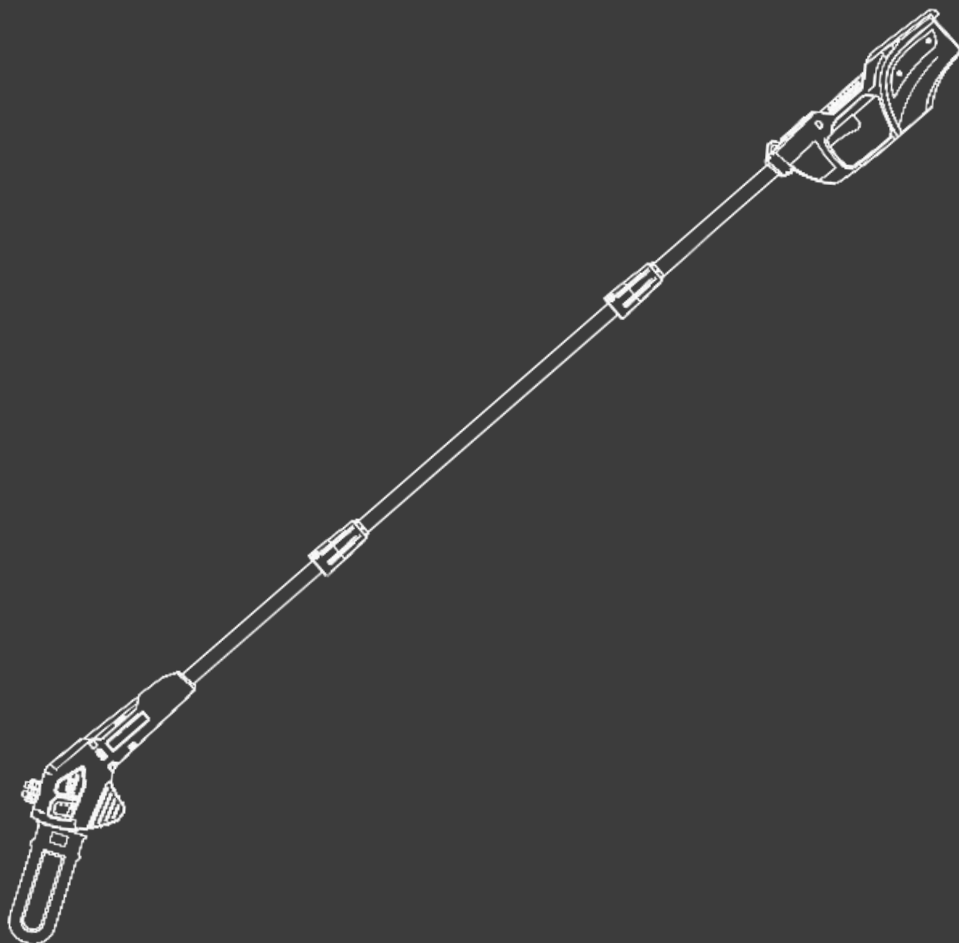


HYUNDAI
POWER PRODUCTS

CORDLESS POLE TRIMMER

HELPN40V-A

ORIGINAL INSTRUCTIONS



WARNING: Read thoroughly the instruction manual before use.

SAFETY WARNINGS

General Power Tool Safety Warnings



WARNING Read all safety warnings and all instructions. Failure to follow the warnings and instructions may result in electric shock, fire and/or serious injury.

Save all warnings and instructions for future reference. The term "power tool" in the warnings refers to your mains-operated (corded) power tool or battery-operated (cordless) power tool.

1) Work area safety

- a) **Keep work area clean and well lit.** Cluttered or dark areas invite accidents.
- b) **Do not operate power tools in explosive atmospheres, such as in the presence of flammable liquids, gases or dust.** Power tools create sparks which may ignite the dust or fumes.
- c) **Keep children and bystanders away while operating a power tool.** Distractions can cause you to lose control.

2) Electrical safety

- a) **Power tool plugs must match the outlet. Never modify the plug in any way. Do not use any adapter plugs with earthed (grounded) power tools.** Unmodified plugs and matching outlets will reduce risk of electric shock.
- b) **Avoid body contact with earthed or grounded surfaces, such as pipes, radiators, ranges and refrigerators.** There is an increased risk of electric shock if your body is earthed or grounded.
- c) **Do not expose power tools to rain or wet conditions.** Water entering a power tool will increase the risk of electric shock.
- d) **Do not abuse the cord. Never use the cord for carrying, pulling or unplugging the power tool. Keep cord away from heat, oil, sharp edges or moving parts.** Damaged or entangled cords increase the risk of electric shock.
- e) **When operating a power tool outdoors, use an extension cord suitable for outdoor use.** Use of a cord suitable for outdoor use reduces the risk of electric shock.
- f) **If operating a power tool in a damp location is unavoidable, use a residual current device (RCD) protected supply.** Use of an RCD reduces the risk of electric shock.

3) Personal safety

- a) **Stay alert, watch what you are doing and use common sense when operating a power tool. Do not use a power tool while you are tired or under the influence of drugs, alcohol or medication.** A moment of inattention while operating power tools may result in serious personal injury.
- b) **Use personal protective equipment. Always wear eye protection.** Protective equipment such as dust mask, non-skid safety shoes, hard hat, or hearing protection used for appropriate conditions will reduce personal injuries.
- c) **Prevent unintentional starting. Ensure the switch is in the off-position connecting to power source and/or battery pack, picking up or carrying the tool.** Carrying power tools with your finger on the switch or energizing power tools that have the switch on invites accidents.
- d) **Remove any adjusting key or wrench before turning the power tool on.** A wrench or a key left attached to a rotating part of the power tool may result in personal injury.
- e) **Do not overreach. Keep proper footing and balance at all times.** This enables better control of the power tool in unexpected situations.

f) **Dress properly. Do not wear loose clothing or jewelry. Keep your hair, clothing and gloves away from moving parts.** *Loose clothes, jewelry or long hair can be caught in moving parts.*

g) **If devices are provided for the connection of dust extraction and collection facilities, ensure these are connected and properly used.** *Use of dust collection can reduce dust-related hazards.*

4) **Power tool use and care**

a) **Do not force the power tool. Use the correct power tool for your application.** *The correct power tool will do the job better and safer at the rate for which it was designed.*

b) **Do not use the power tool if the switch does not turn it on and off.** *Any power tool that cannot be controlled with the switch is dangerous and must be repaired.*

c) **Disconnect the plug from the power source and/or the battery pack from the power tool before making any adjustments, changing accessories, or storing power tools.** *Such preventive safety measures reduce the risk of starting the power tool accidentally.*

d) **Store idle power tools out of the reach of children and do not allow persons unfamiliar with the power tool or these instructions to operate the power tool.** *Power tools are dangerous in the hands of untrained users.*

e) **Maintain power tools. Check for misalignment or binding of moving parts, breakage of parts and any other condition that may affect the power tool's operation. If damaged, have the power tool repaired before use.** *Many accidents are caused by poorly maintained power tools.*

f) **Keep cutting tools sharp and clean.** *Properly maintained cutting tools with sharp cutting edges are less likely to bind and are easier to control.*

g) **Use the power tool, accessories and tool bits etc. in accordance with these instructions, taking into account the working conditions and the work to be performed.** *Use of the power tool for operations different from those intended could result in a hazardous situation.*

5) **Service**

a) **Have your power tool serviced by a qualified repair person using only identical replacement parts.** *This will ensure that the safety of the power tool is maintained.*

Pole saw warnings

- Respect the capacity of the tool. Use the tool as described in this manual and for its intended use, and safely.
- Do not use the tool if the switch is defective. In the event of a malfunction, do not use the tool and take it to a qualified service for repairs.
- Remove the battery before making adjustments, changing the accessories or storing the tool.
- Keep the tool out of the reach of children. People who are not familiar with the tool or who have not read these instructions should not use it. Tools are dangerous when used by untrained people.
- The tool must be regularly maintained. Regular tool maintenance reduces malfunctions and improves work efficiency.
- Check that the moving parts are working properly and that they are not jammed. Check that there are no broken or damaged parts that could impair the functioning of the tool. If the tool is damaged or faulty, do not use the tool anymore and bring it to a qualified service for repairs.
- Keep cutting tools sharp and clean. Carefully maintained tool as explained in this manual.
- Never touch any part of the body of the cutting chain when the tool is operating. Before starting the tool, make sure that the cutting chain is not in contact with anything. A moment of inattention while using the tool may cause your clothes or part of the body to stick to the cutting chain.
- Wear safety glasses and hearing protection. Additional protective equipment is recommended such as helmets, protective gloves, close-fitting clothes of protection and safety antiskid shoes.
- Do not place yourself on the path of falling branches.

- Before felling, check where the trees or branches are going to fall. Make sure that there are no obstacles to prevent or hinder the fall.
- Do not work in areas where the grass is wet and where the soil is slippery.
- Do not use this tool in a tree, on an unstable ladder or surface.
- Adopt a stable position and keep your balance constantly.
- Hold the tool firmly with both hands when the engine is running.
- When the chain is moving, it must not touch objects, materials or persons.
- Start cutting only with a chain at full speed.
- Do not attempt to insert the saw into a pre-existing cut. Always make a new cut.
- Pay attention to moving branches or other forces that could close a cut and pinch or hinder the chain.
- Do not attempt to cut a branch with a diameter greater than the cutting length of the chain saw.
- Always switch off the tool, let the chain stop and remove the battery before making any adjustments, maintenance or repairs. Always install the blade guard to store the tool or transport it.
- The chain must remain sharp and taut. Regularly check the tension of the chain.
- Only use replacement parts and original accessories.
- Use only the manufacturers specified replacement guides and chains. Incorrect replacement guides and chains may cause chain breakage and / or rebound.
- Always hold the appliance firmly with both hands.
- Check the condition of the tool before and each use. Do not use a device with damaged parts. In case of damages, do not use the tool and bring to an authorized repairer for inspection and reparation.
- Immediately stop the device if an abnormal level of vibration has been detected. In case of damage to the blade, it is necessary to change the complete set of blades.
- Use the device only if all protective devices are mounted. Do not use the device with faulty protective equipment. Do not modify the unit.
- Do not work with the tool when it rains, in bad weather or in a damp environment. Do not use the machine when there is a risk of thunderstorms and storms.
- Only work outdoors, under daylight or under a good artificial lighting.
- Always carry the appliance by its handle.
- Tie long hair in a way to prevent them from coming into contact with the blades. Do not wear jewelry and loose clothing when operating the machine.
- The appliance should never be used near people, especially children and pets. Stop the operation immediately if this condition is not met. In all cases, ensure a safe area of at least 15 meters around the work area.
- The operator is responsible for accidents caused to others.
- Always take a stable working position. Make sure you step on the slopes. Take extreme caution when working on slopes.
- Do not use the tool when you are tired, sick or under the influence of alcohol or drugs.
- Take regular breaks to reduce the risk of fatigue.
- Never leave the machine unattended. Stop the remove the battery when the tool is left unattended.
- The device must always be used fully assembled and secured.
- Store the tool with its blade guard and out of the reach of children
- Never use an incomplete or unauthorized tool.
- Local laws may restrict the use of this tool.
- Always use the tool with the supplied harness.
- Check regularly that the cutting attachment stops turning when the engine idles.
- Before and after use and during maintenance, checking for loose fasteners, foil leaks and damaged parts (e.g. cracks in the saw blade).
- Before use check the tensioning of the chain. To adjust the tension of the chain, turn the tension wheel.

- Inspect the tool before use and after dropping or other impacts in order to identify any significant damage or defects. In case of damages or dysfunction, do not use the tool and bring it to a qualified service for inspection and reparation.
- There is danger of using this machine near overhead electric power lines. Always check the working area first and avoid entering in contact with electric power lines.
- Do not use this tool for a long period of time. It is necessary to take some rest periods and changing working positions.

Intended use

This machine has been specially designed to cut the twigs at the top of the trees. This tool is intended for exclusively domestic use. Any other use not expressly permitted in this manual may result in damage to the device, posing a serious hazard to the user and is not permitted. This cordless pole saw machine must NEVER be used intensively, for professional use (including rental) or agriculture or for public gardens or forests.

Residual risks

Even if you use this product in compliance with all safety requirements, the potential risks of injury and damage remain. The following hazards may arise in the structure and design of this product:

- There are harmful health consequences resulting from the emission of vibrations if the product is used for long periods of time or not properly managed and properly maintained.
- There is risk of injury and property damage due to attachments or broken the sudden impact of hidden objects when using cutting.
- Risk of injury to persons and property caused by flying objects.
- Prolonged use of this product exposes the operator to vibration and can produce so-called "white finger" disease. To reduce the risk, wear gloves and keep your hands warm.
- If any of the symptoms of "white finger syndrome" occur, seek immediate medical attention
- Symptoms of the "white finger" include numbness, loss of sensitivity, tingling, tingling, and pain, loss of strength, color changes or skin condition. These symptoms usually appear on the fingers, hands or wrists. Risk increases at low temperatures.
- There is a risk of loss hearing if the user is exposed for a long time to the noise and specifically if a hearing protection is not worn.

Symbols



Warning symbol



Wear protective including a helmet, hearing protection, ocular protection



Wear safety gloves



Wear safety antiskid shoes



Read instruction manual and follow all warnings and instructions



Remove battery when servicing and maintenance



Do not expose the tool to rain and humidity



Do not saw with the tip of the saw head.



Do not use the tool with only one hand



Always hold the tool with two hands



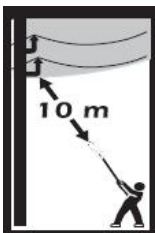
Be aware about the risk of saw head back.



There are risks of projection



Keep bystanders away from the cutting area, at least 15m



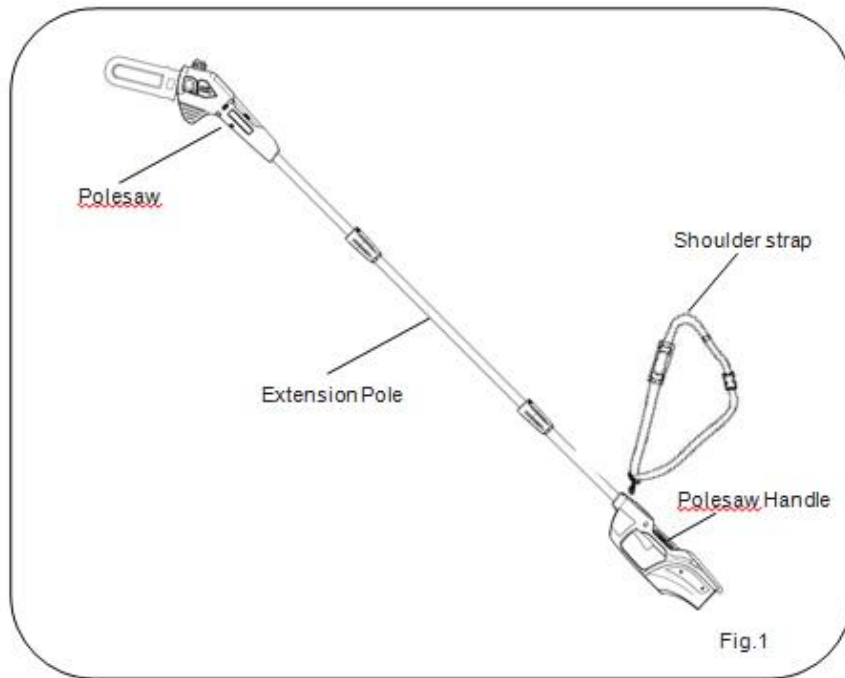
Keep the pole pruner a sufficient distance away from electrical power lines. Maximum height of use: 10m



Guaranteed sound power level

PRODUCT

Description



Technical data

Volume of oil tank	50 ml
Cutting attachment	Saw chain CL14333X 3/8" chain pitch, 33 drive links Guide bar M1430833- 203 mm long (8 1318TL inch)
Vibration	< 2,5 m/s ² k= 1,5 m/s ²
Guarantee sound power level	92 dB(A)
Measured sound power level	88,3 dB(A) K=3 dB(A)
Sound pressure level	74,6 dB(A) K=3 dB(A)
Weight	4 kg (without battery, harness and cutting mains)
Tension	36Vd.c. (max 40V)
Chain speed	7 m/s
Speed of spindle	3600/min

Information:

The declared vibration total value has been measured in accordance with a standard test method and may be used for comparing one tool with another;

The declared vibration total value may also be used in a preliminary assessment of exposure.

Warning:

The vibration emission during actual use of the power tool can differ from the declared total value depending on the ways in which the tool is used; and

of the need to identify safety measures to protect the operator that are based on an estimation of exposure in the actual conditions of use (taking account of all parts of the operating cycle such as the times when the tool is switched off and when it is running idle in addition to the trigger time).

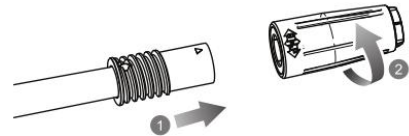
Wear hearing protection.

ASSEMBLY

The installation of the chain and the guide (and their adjustment) shall be done tool switched off and battery removed. Wear protective gloves during assembly.

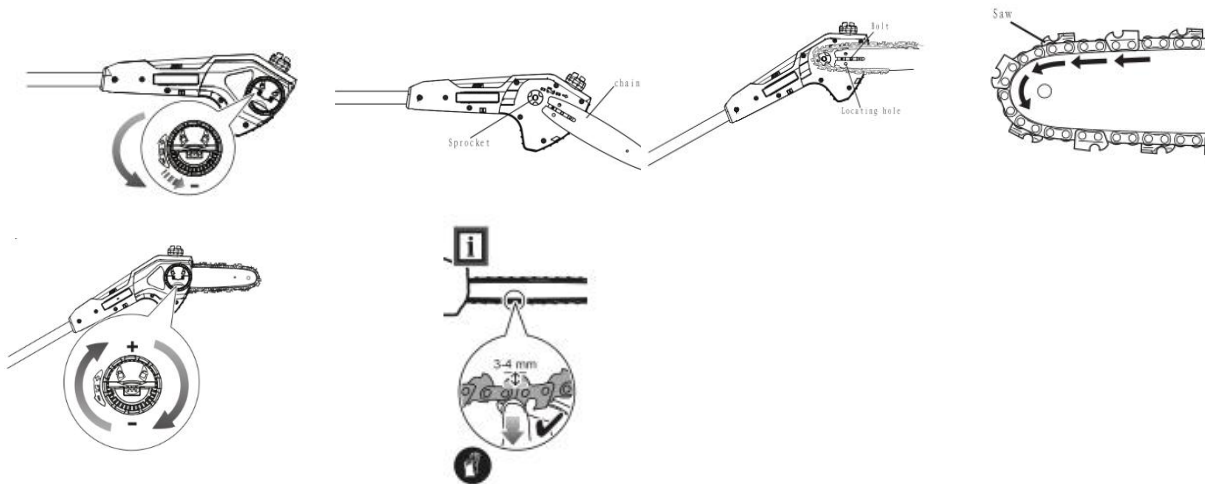
Tube installation

- Install the extension tube to the machine tube. Tighten the shaft coupler.
- Install in the same way the cutting head on the extension tube.



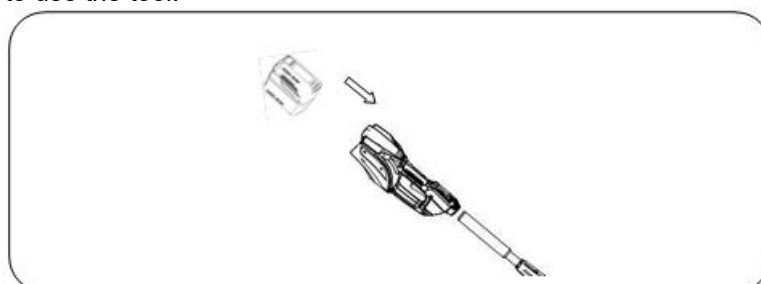
Chain and bar

- Disassemble the tensioner lock and remove the sprocket cover.
- Install the bar, and slide the chain slowly.
- Install the chain as shown in the figure (Make sure of the direction of the teeth).
- Install the sprocket cover on the bolt, and tighten the sprocket wheel. Make sure the tensioning block just through the hole of the bar.
- Tighten the tension wheel.



Installing battery pack

- Place the battery pack in battery port of the tool. Align the raised rib on the battery pack with the groove in battery port.
- Make sure the latch on bottom of the battery pack snaps in place and that battery pack is secured before starting to use the tool.



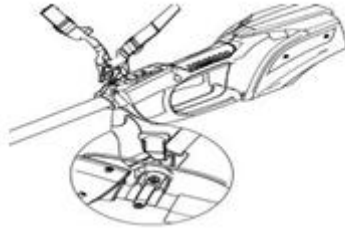
Note The battery and charger were not included in pack

Removing battery pack

- Press and hold the latch button at the bottom of the battery pack.
- Remove battery pack from the pole saw.

Shoulder strap

- Hang the harness in its dedicated location on the tube. Adjust the size of the harness properly to have a correct working position.
- The shoulder strap is equipped with an emergency release mechanism. To detach the machine from the shoulder strap in emergency situations, pull the rope to move away from the machine.



WARNING

Check the emergency release mechanism BEFORE operating the machine.

Be sure to hold the machine when operating the emergency release mechanism.

When holding the machine firmly with your right hand, press both sides of the belt buckle.

USE

Charging the battery

Align the raised rib on the battery pack with the groove on the battery charger. Plug the charger to the electrical alimention.

You can see the charge status by pressing the charge level indicator which is on the battery. The battery is fully charged when all light are switched on.

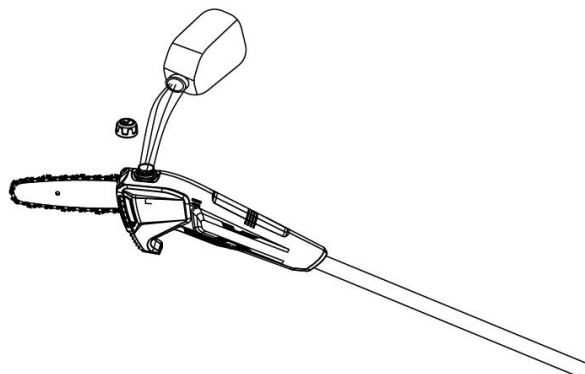
Adding bar and chain lubricant

Always use bar and chain lubricant. Chain lubricant is formulated to perform over a wide temperature range with no dilution required.

The bar and chain lubricant level should be checked after every 20 minutes of use and refilled as needed.

Remove the oil cap. Carefully pour the lubricant into the reservoir. Wipe off excess oil.

Repeat if needed.



NOTE: Do not use dirty, used or contaminated oil. Damage may occur to the bar or chain.

NOTE: It is normal for oil to seep from the saw when not in use. To prevent seepage, empty the oil tank after each use then run for one minute.

When storing the unit for a long period of time (three months or longer) be sure that the chain is lightly lubricated. This will prevent rust on the chain and on bar sprocket.

Operation

Danger! Never cut rear power lines, electric cords or other electric sources. If bar and chain jams on any electrical cord or line, do not touch the bar or chain; they can become electrically live and very dangerous. Contact with the live electric cords or lines will result in death by electrocution or serious injury. Hold the saw by the rear handle or place it and move away safely. Disable power to the damaged line or cable before attempting to release the bar and chain. Contact with electrical cables or lines will result in death by electric shock or serious injury.

Warning! Do not allow familiarity with this product to make you careless. Remember that a careless fraction of a second is sufficient to inflict serious injury.

Do not use any attachments or accessories not recommended by the manufacture of this product. The use of attachments or accessories not recommended can result in serious personal injury.

Applications

You may use this product for the purposes listed below:

- Limbing
- Pruning

Starting and stopping

Hold the pole saw firmly with hands, one holding the rear handle and one handling the tube. Ensure that you are well away from anything that may contact the blade.

- Press and hold the trigger lock button.
- Press the trigger.

To stop the tool, release the trigger to stop the pole saw. Upon release the trigger, the ON/OFF trigger lock-out button will automatically reset to the locked position.

Turbo/eco button

Press the turbo button, to reach the maximum speed. Press eco button again to come to the normal speed.

Preparation for cutting

Wear non-slip gloves for maximum grip and protection. Maintain a proper grip on the unit whenever the motor is running. Use your right hand to firmly grip the rear handle while your left hand has firm a grip on the pole shaft.

Hold unit firmly with both hands. Always keep your left hand on the pole shaft and your right hand on the rear handle, so your body is to the left of the chain line. Never use a left handed (cross handed) grip, or any stance that places your body or arm across the chain line.

Never stand directly under the limb you are cutting.

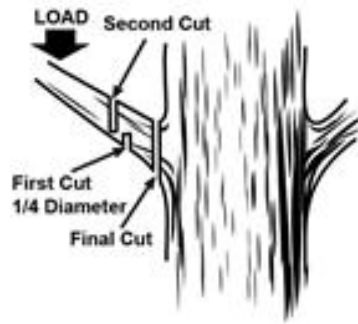
Basics cutting guide

Follow the steps below to prevent damage to tree or shrub bark. Do not use a back-and-forth sawing motion.

Make a shallow first cut (1/4 of limb diameter) in the underside of the limb close to the main limb or trunk.

Make a second cut, from the top side of the limb outwards from the first cut. Continue to cut through the limb until the limb separates from the tree. Be prepared to balance the weight of the tool when the limb fails.

Make a final cut close to trunk



NOTE: For second and final cuts (from top of limb of branch), hold front cutting guide against the limb being cut. This will help steady the limb and make it easier to cut. Allow chain to cut for you. Exert only low downward pressure. If you force the cut, damage to the bar, chain or motor can result.

Release the trigger as soon as the cut completed.

Failure to follow proper cutting procedures will result in the bar and chain binding and becoming pinched or trapped in the limb. If this should happen:

Stop the motor and remove the battery pack.

If the limb can be reached from the ground, lift the limb while holding the saw. This should release the “pinch” and free the saw.

If the saw is still trapped, call a professional for assistance.

Limbing and pruning

This unit designed for trimming small branches and limbs up to 100mm diameter. For best results, observe the following precautions.

Plan the cut carefully. Be aware of the direction in which the branch will fall. Never stand directly under the limb you are cutting. Always position yourself out of the path of falling debris.

The most typical cutting application is to position the unit at an angle of 60° or less, depending on the specific situation. As the angle of the pole saw shaft to ground increases, the difficulty of making the first cut (from the underside of limb) increases.

Remove the long branches in several stages.

Cut lower branches first to allow the top branches more room to fall.

Work slowly. Keep both hands on the saw with a firm grip. Maintain secure footing and balance.

Keep the tree between you and the chain while limbing. Cut from side of tree opposite branch you are cutting.

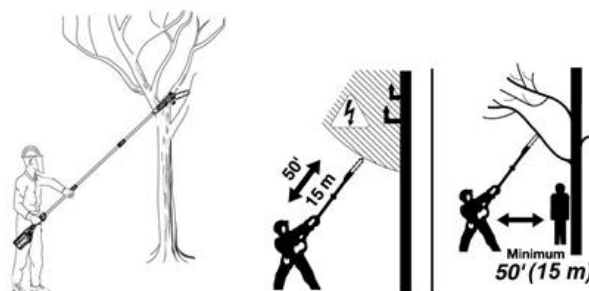
Never stand on a ladder or other unstable support while using the pole saw. Always avoid any position which can cause you to lose your balance and cause severe injury.

Do not make the flush cut next to the main limb or trunk until you have cut off the limb further out to reduce the weight. Following proper cutting procedures will prevent stripping the bark from the main member.

Keep others persons at least 50 feet (15m) from the work area. Distractions can cause you to lose control.

Risk of electrocution hazard. To prevent shock, do not operate within 50' (15m) of overhead electrical lines. Always check surrounding area for hidden electrical lines.

Do not overreach. Make sure your footing is firm. Keep feet apart. Divide your weight evenly on both feet.



MAINTENANCE AND STORAGE

Before inspecting, cleaning or servicing the unit, stop the motor, wait for all moving parts to stop, and remove the battery pack. Failure to follow these instructions can result in serious personal injury or property damage.

Maintenance must be provided after each use. Improper or lack of maintenance may cause dysfunction of the tool, reduction of the performance, kickback of the chain, injuries and accidents.

Keep the machine in good working condition, as well as the cutting attachment and the cutting attachment guard.

Always use recommended spare parts accessories recommended by the manufacturer. Do not use non-conform parts, they can damage the tool, create kickback and accidents.

a. General maintenance

Avoid using solvents when cleaning plastic parts. Most plastics are susceptible to damage from various types of commercial solvents and may be damaged by their use. Use clean cloths to remove dirt, dust, oil, grease, etc.

Do not at anytime let brake fluids, gasoline, petroleum-based products, penetrating oils, etc come in contact with plastic parts. Chemical can damage, weaken or destroy plastic, which could result in serious personal injury.

All pole saw service, other than the items listed in these maintenance instructions, should be performed by competent pole service personnel.

a. Lubrication of the chain

- The guide and chain saw must be permanently oiled.
- If the chain and the guide are not lubricated, it will increase the wear of these elements, until damage.
- Check the oil level of the fuel tank on the engine block. Fill the tank with oil when it is empty.
- Process like described in this manual for chain lubrication.
- Oil filling must be done far from naked flame and place where fire might occur.

b. Replacing guide and chain

- Only a correct installation of the guide will ensure optimal use. Follow the instructions of this manual for installing the guide and chain

c. Sharpening

Sharpening shall be done by a qualified service or by an experienced person who must follow the below instructions. Do not perform sharpening if you do not have the knowledge to do it.

Be careful to file all cutters to the specified angles and to the same length, as fast cutting can be obtained only when all cutters are uniform.

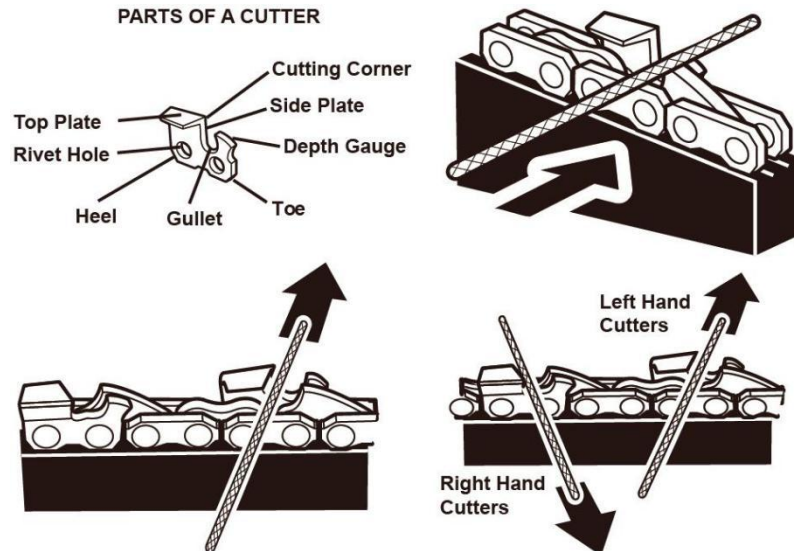
Tighten the chain tension enough that the chain does not wobble. Do all of your filing at the midpoint of the bar. Wear gloves for protection.

Use a round file and holder.

Keep the file level with the top plate of the tooth. Do not let the file dip or rock.

Using light but firm pressure, stroke towards the front corner of the tooth. Lift file away from the steel on each return stroke.

Put a few firm strokes on every tooth. File all left hand cutters in one direction. Then move to the other side and file the right hand cutters in the opposite direction. Occasionally remove filings from the file with a wire brush.



d. Transport

For transport, use the guard sleeve. Be careful not to turn the unit on during transport. Always carry the tool by its handle. The tool must be transported in such a way as to avoid accidents and damage.

e. Cleaning

- Clean the body of the tool with a soft, damp cloth.
- Never immerse the machine in water or use detergent, alcohol, gasoline, etc.
- The saw chain must only be wiped dry.
- In case of problem or for thorough cleaning, consult an authorized service engineer.

f. Storage

Clean all foreign material from the product. Store unit indoor in a dry, well-ventilated area, which is inaccessible to children. Keep away from corrosive agents such as garden chemicals and de-icing salts.

Always place the blade guard on the saw bar when transporting or storing the pole saw. The black guard is a snug fit and must be attached very carefully due to the sharp teeth on the saw chain. This is best done by grasping the blade guard at one end, in the center portion of the guard, and carefully sliding it over the chain. Use caution to avoid the sharp teeth of the chain.

NOTE: The chain is very sharp. Always wear protective glove when handling the chain.

DISPOSAL



Disposal of an exhausted battery pack

To preserve natural resources, please recycle or dispose of the battery pack properly. Consult your local waste authority for information regarding available recycling and/or disposal options. Discharge your battery pack by operating your tool, then remove the battery pack from the tool and cover the battery pack connections with heavy duty adhesive tape to prevent short circuit and energy discharge. Do not attempt to open or remove any of the components.



Selective collection of electrical and electronic waste

Electrical products should not be discarded with household products. According to the European Directive 2012/19/EU on waste electrical and electronic equipment and its implementation into national law, electrical products used must be collected separately and disposed of at collection points provided for this purpose. Talk with your local authorities or dealer for advice on recycling.

DECLARATION OF CONFORMITY



BUILDER SAS

ZI, 32, rue Aristide Bergès – 31270 Cugnaux - France
Tel: +33 (0)5.34.502.502 Fax: +33 (0)5.34.502.503

Declare that the machine
CORDLESS POLE TRIMMER
HELPN40V-A

Serial number: 20201135588-20201135737

Is in conformity with the following standards
EN 60745-1:2009+A11:2010
EN ISO 11680-1:2011
EN 55014-1:2006+A1:2009+A2:2011
EN 55014-2:2015

Is in conformity with the following Directives
Directive Machine 2006/42/CE
Directive EMC 2014/30/UE
Directive RoHS (EU)2015/863 amending 2011/65/EU
Noise Directive 2000/14/EC Annex V & Directive 2005/88/EC

Guarantee sound power level	92 dB(A)
Measured sound power level	88,3 dB(A) K=3 dB(A)

Notified body EU 0905

Intertek Deutschland GmbH, Stangenstraße 1, 70771 Leinfelden-Echterdingen

Sitz Leinfelden-Echterdingen, Registergericht Stuttgart, HRB Nr. 225262, Geschäftsführer: Michael Jungnitsch
Tel.: +49 711 27311-0, Fax: +49 711 27311-559, E-Mail: gs@intertek.com, web: www.intertek.de

Responsible of technical file: Mr Olivier Patriarca

Philippe MARIE / PDG
Cugnaux, 22/09/2020

HYUNDAI

WARRANTY

The manufacturer guarantees the product against defects in material and workmanship for a period of 2 years from the date of the original purchase. The warranty only applies if the product is for household use. The warranty does not cover breakdowns due to normal wear and tear.

The manufacturer agrees to replace parts identified as defective by the designated distributor. The manufacturer does not accept responsibility for the replacement of the machine, in whole or in part, and/or ensuing damage.

The warranty does not cover breakdowns due to:

- insufficient maintenance.
- abnormal assembly, adjustment or operations of the product.
- parts subject to normal wear and tear.

The warranty does not extend to:

- shipping and packaging costs.
- using the tool for a purpose other than that for which it was designed.
- the use and maintenance of the machine done in a manner not described in the user manual.

Due to our policy of continuous product improvement, we reserve the right to alter or change specifications without notice. Consequently, the product may be different from the information contained therein, but a modification will be undertaken without notice if it is recognized as an improvement of the preceding characteristic.

READ THE MANUAL CAREFULLY BEFORE USING THE MACHINE.

When ordering spare parts, please indicate the part number or code, you can find this in the spare parts list in this manual. Keep the purchase receipt; without it, the warranty is invalid. To help you with your product, we invite you to contact us by phone or via our website:

- **+33 (0)9.70.75.30.30**
- **<https://services.swap-europe.com/contact>**

You must create a "ticket" via the web platform.

- Register or create your account.
- Indicate the reference of the tool.
- Choose the subject of your request.
- Describe your problem.
- Attach these files: invoice or sales receipt, photo of the identification plate (serial number), photo of the part you need (for example: pins on the transformer plug which are broken).



PRODUCT FAILURE

WHAT TO DO IF MY MACHINE BREAKS DOWN?

If you bought your product in a store:

- a) Empty the fuel tank.
- b) Make sure that your machine is complete with all accessories supplied, and clean! If this is not the case, the repairer will refuse the machine.

Go to the store with the complete machine and with the receipt or invoice.

If you bought your product on a website:

- a) Empty the fuel tank.
- b) Make sure that your machine is complete with all accessories supplied, and clean! If this is not the case, the repairer will refuse the machine.
- c) Create a SWAP-Europe service ticket on the site: <https://services.swap-europe.com> When making the request on SWAP-Europe, you must attach the invoice and the photo of the nameplate (serial number).
- d) Contact the repair station to make sure it is available before dropping off the machine.

Go to the repair station with the complete machine packed, accompanied by the purchase invoice and the station support sheet downloadable after the service request is completed on the SWAP-Europe site

For machines with engine failure from manufacturers BRIGGS & STRATTON, HONDA and RATO, please refer to the following instructions.

Repairs will be done by approved engine manufacturers of these manufacturers, see their site:

- <http://www.briggsandstratton.com/eu/fr>
- <http://www.honda-engines-eu.com/fr/service-network-page;jsessionid=5EE8456CF39CD572AA2AEEDFD290CDAE>
- <https://www.rato-europe.com/it/service-network>

Please keep your original packaging to allow for after-sales service returns or pack your machine with a similar cardboard box of the same dimensions.

For any question concerning our after-sales service you can make a request on our website <https://services.swap-europe.com>

Our hotline remains available at +33 (9) 70 75 30 30.



WARRANTY EXCLUSIONS

THE WARRANTY DOES NOT COVER:

- Start-up and setting up of the product.
- Damage resulting from normal wear and tear of the product.
- Damage resulting from improper use of the product.
- Damage resulting from assembly or start-up not in accordance with the user manual.
- Breakdowns related to carburetion beyond 90 days and fouling of carburetors.
- Periodic and standard maintenance events.
- Actions of modification and dismantling that directly void the warranty.
- Products whose original authentication marking (brand, serial number) has been degraded, altered or withdrawn.
- Replacement of consumables.
- The use of non-original parts.
- Breakage of parts following impacts or projections.
- Accessories breakdowns.
- Defects and their consequences linked to any external cause.
- Loss of components and loss due to insufficient screwing.
- Cutting components and any damage related to the loosening of parts.
- Overload or overheating.
- Poor power supply quality: faulty voltage, voltage error, etc.
- Damages resulting from the deprivation of enjoyment of the product during the time necessary for repairs and more generally the costs related to the immobilization of the product.
- The costs of a second opinion established by a third party following an estimate by a SWAP-Europe repair station
- The use of a product which would show a defect or a breakage which was not the subject of an immediate report and/or repair with the services of SWAP-Europe.
- Deterioration linked to transport and storage*.
- Launchers beyond 90 days.
- Oil, petrol, grease.
- Damages related to the use of non-compliant fuels or lubricants.

* In accordance with transport legislation, damage related to transport must be declared to carriers within 48 hours maximum after observation by registered letter with acknowledgement of receipt.

This document is a supplement to your notice, a non-exhaustive list.

Attention: all orders must be checked in the presence of the delivery person. In case of refusal by the delivery person, it you must simply refuse the delivery and notify your refusal.

Reminder: the reserves do not exclude the notification by registered letter with acknowledgement within 72 hours.

Information:

Thermal devices must be wintered each season (service available on the SWAP-Europe site). Batteries must be charged before being stored.

HYUNDAI
POWER PRODUCTS

For Inquiries, please contact:

BUILDER SAS

32, rue Aristide Bergès Z1 31270 Cugnaux, France

Tél. : +33 (0) 5.34.502.502 Fax : +33 (0) 5.34.502.503

<http://www.hyundaipower-fr.com/>

Fabriqué en République Populaire de Chine (PRC)